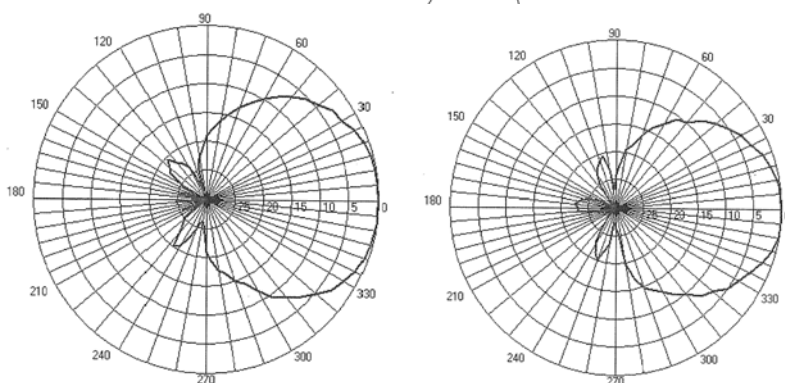
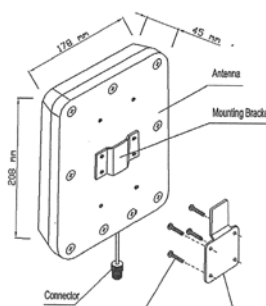


I-ATP2-800/2500

Indoor Panel Antenna



I-ATP2-800/2500 Indoor Antenna is a broadband directional antenna. Using the broadband technique in design, I-ATP2-800/2500 can be used in transmitting signal of communication system.

The light and small structure make it easy to install on the wall. All the antennas are tested by HP network analyzer before delivery.

ELECTRONIC SPECIFICATIONS

Frequency Range Mhz	806~960 1710~2500
Typical Gain dBi	7.0
VSWR	≤1.5
Beamwidth in Hor. Plane -°	70
Beamwidth in Ver. Plane -°	50
Max Power W	50
Polarization	Vertical
Input Impedance Ω	50
Connector	N-F

MECHANICAL SPECIFICATIONS

Dimension mm	210x180x44
Weight kg	0.6
Radiating Element Material	Silver-gilt Copper
Radome Material	Anti-UV ABS
Radome Color	White